

How do I read my meter?

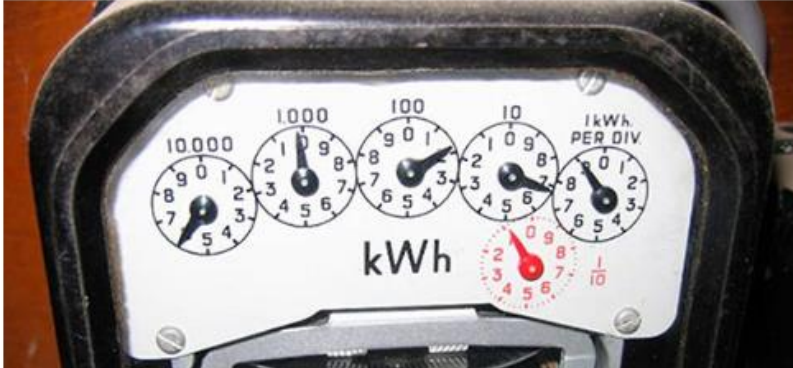
Digital Meters

Read from left to right ignoring any numbers marked 1/10 or 1/1000 or any numbers in red.



Clock Meters

Read dials from left to right. Ignore any numbers marked 1/10 or 1/100. Ignore any numbers in red. If the clock hand is pointing between two numbers, read the lower number.



Keypad Meters

Press 9 on the Keypad and read the digits from left to right.

